

Features

HDL-MP2B.46, MP4B.46, MP6B.46, MP8B.46 Multi-function panel, button labels, plate material and color are easy to replace.

- Key Mode: Single on/off, Single on, Single off, Combination on, Combination off, Combination on/off, Double click single on/off, Double click combination on/off, Inching, Short/long press, Short press/long inching
- Key Control Type: Scene, Sequence, Timer, Universal Switch, Single Channel Control, Broadcast Scene, Broadcast Channel, Curtain Control, GPRS Control, Panel Control, Security Module, Music Play, Universal Control etc.
- Button Lock, mutually exclusive function
- IR Receiver
- Customized Button labels, replaceable the plate
- Support upgrade firmware from HDL Bus

Important Notes

- The Panel must work with HDL - MPPI.46
- Customer can design and replace the button labels
- Customer can replace the plate of different material and color
- IR Control - Need to customize the plate with IR receiver hole
- BUS Cable - HDL Bus/KNX Cable, 0.8mm Single Core Copper cable
- BUS Connection - Series connection (hand by hand)
- Installation - Together with HDL - MPPI.46

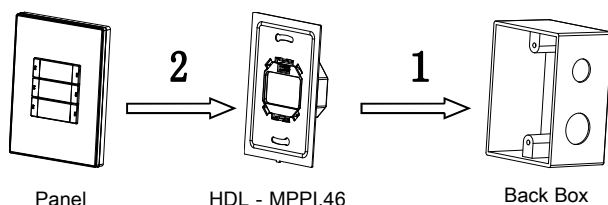
Product Specifications

- Working Voltage (Supplied by HDL - MPPI.46): DC12-30V
- Output Current : 15mA/DC24V
- Installation: US Standard back box
- Dimension : 86mm×116.5mm×10.5mm
- Certification: CE
- Working Temperature : 0~45°C
- Working relative Humidity : 20%~90%
- Storage Temperature : -40°C~+55°C
- Storage relative Humidity : 10%~93%
- Protection Degree: IP20

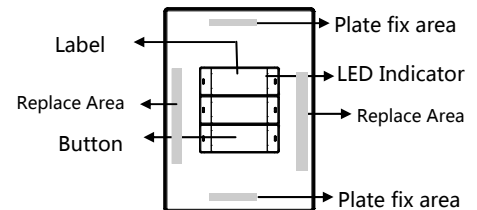
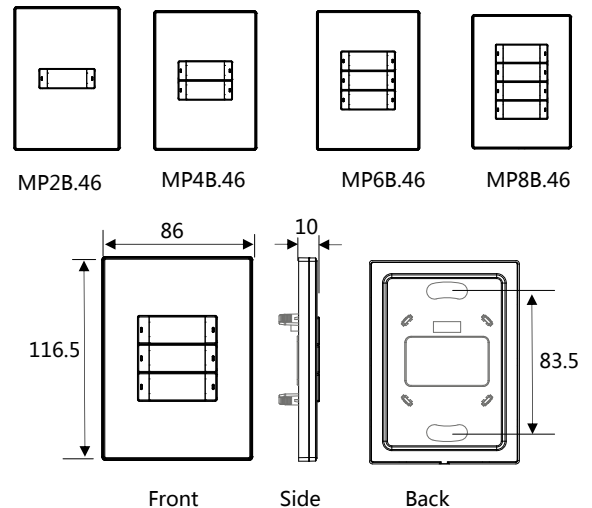
HDL-Bus Definition for cable

Bus	HDL Bus/KNX Cable
COM	Black
DATA-	White
DATA+	Yellow
DC24V	Red

Installation steps



Type



Push Button : On/off, Dim

Address Modification: Keep press any button for about 15S, after button LED indicator flash together, use HDL-Bus pro Set up software to modify the address by step "Address Management > Address Modification", then press any button will exit program mode

Button Label: Customer can print and replace their own button labels, pull out the cover, put down the label, then fit the cover

Panel Unlock: after the button locked, press the first button and the last button for about 2S

Plate Replacement: use a small slotted screwdriver insert the gap from left/right replace area, pry up the plate and remove the plate into the border and press the fix area.

Remove Panel: use slotted screwdriver to insert the split gap, separate the panel and power module (MPPI.46)

